

Product Description

ATM(F858L)

Catalog Number: 26141

Gene Symbol: ATM

Description: Anti-ATM(F858L) Mouse Monoclonal Antibody

Background: Ataxia telangiectasia mutated (ATM) is a serine/threonine protein kinase that is recruited and activated by DNA double-strand breaks. It phosphorylates several key proteins that initiate activation of the DNA damage checkpoint, leading to cell cycle arrest, DNA repair or apoptosis. Activity of ATM protein is under tight control, and mutation of ATM can cause disease such as Ataxia telangiectasia (AT) and cancers.

Immunogen: A synthetic peptide from the internal region of ATM which includes the mutation of F858L, human origin.

Tested Applications: ELISA, WB, IF, IHC

Recommended Dilutions:

ELISA:	1:1000-1:5000
WB:	1:500-1:1000
IF:	1:50-1:100
IHC:	1:50-1:100

Concentration: 1 mg/ml

Host: Mouse

Clonality: Monoclonal

Isotype: IgG

Purity: Purified from ascites

Format: Liquid

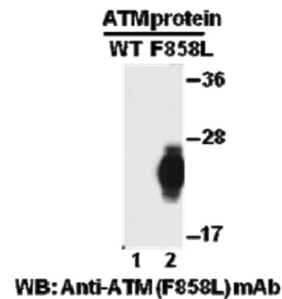
Preservative: No

Constituents: PBS (without Mg²⁺ and Ca²⁺), pH7.4, 150 mM NaCl, 50% glycerol

Species Reactivity: Recognizes F858L mutant, but not wild-type ATM of vertebrates.

Storage Conditions: Store at -20°C. Avoid repeated freezing and thawing

Western blot:

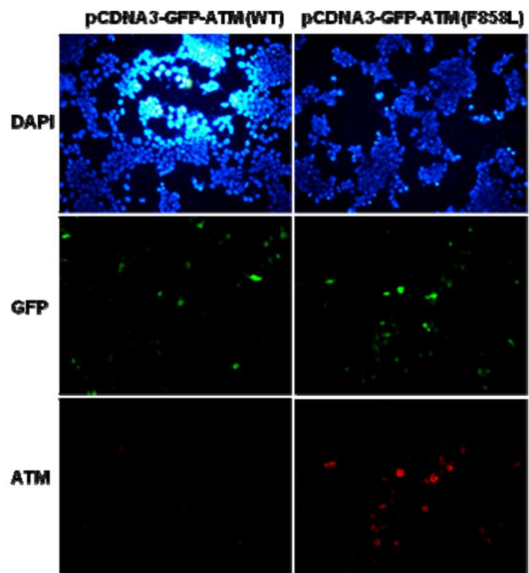


Western blot analysis of recombinant ATM (F858L) and wild type proteins.

Purified His-tagged ATM (F858L) protein (amino acids 1-76, lane 2) and corresponding wild type protein (lane 1) were blotted with anti-ATM (F858L) mouse monoclonal antibody (Cat. # 26141)

FOR RESEARCH USE ONLY. NOT FOR DIAGNOSTIC APPLICATIONS

Immunofluorescence:



Immunofluorescence of cells expressing EGFR proteins with anti-EGFR (F858L) antibody.

HEK293T cells were transfected with pCDNA3-GFP-ATM (WT) plasmid (left column) or pCDNA3-GFP-ATM (F858L) plasmid (right column), then fixed and stained with anti-ATM (F858L) monoclonal antibody (Cat. # 26141).

FOR RESEARCH USE ONLY. NOT FOR DIAGNOSTIC APPLICATIONS